



ELIT eConnector 1.10.0

Interface for integration customer's IS with ELIT company
Part of eClient package

1. Introduction

Dear customer, we are pleased to show you an interface which allows you to connect your information system with ELIT company online. The purpose of the interface is sharing information which allows you to work more effectively in real time. For example faster storing of ordered parts by electronic delivery note.

Supported functionalities are:

- Goods information
- Delivery note download
- Loan download
- Credit note download
- Order information
- Other information
- Sending orders

Detailed description of all supported informations can be found bellow in chapter „interface description“.

The interface is provided through web services. To connect your information system (IS) with our web services please contact your IS developer.

This document describes technical details for IS developers.

2. Interface description

The interface is provided by the web service, which is available at:

<http://icelit02.elit.cz:7606/InterCompany-1.10.0/BuyerService?wsdl>

All the implemented features require user authentication

1. company use ELIT_CZ (ELIT_RO, ELIT_SK, ELIT_UA; ELIT_PL if you are a member of other region)
2. login login, which the user logs into the electronic catalog eCAT
3. password password in the electronic catalog eCAT

Most of the services require a role (permission). To obtain this role for your customer's account please send an email to the contact in the end of this document.



List of functions:

Goods information

getItem and getItemInfo are one of the most important methods. It allows to find out basic information about goods such as price, discount, disponibility and couple other information.

Input parameter of the getItem method is an ActiveNo and returns InternalNo, retail price and supplier in the response. Method getItemInfo use this InternalNo as an input parameter and returns disponibility and discount, so it is possible to count the customer's price.

Item **getItem**(String company, String login, String password, String ActiveItemNo)

Item **getItemInfo**(String company, String login, String password, String ItemNo)

Delivery notes

int **getNumOfShipments**(String company, String login, String password)

List<ShipmentHeader> **getShipmentList**(String company, String login, String password, int pageNo, int pageSize)

ShipmentHeader **getShipmentHeader**(String company, String login, String password, String documentNo)

List<ShipmentLine> **getShipmentLines**(String company, String login, String password, String documentNo)

Loans

int **getNumOfInvoices**(String company, String login, String password, Boolean open, Boolean, closed, Boolean overdue)

List<InvoiceHeader> **getInvoiceList2**(String company, String login, String password, Boolean open, Boolean closed, Boolean overdue, int pageNo, int pageSize)

InvoiceHeader **getInvoiceHeader**(String company, String login, String password, String invoiceNo)

List<InvoiceVatSummary> **getInvoiceVatSummary**(String company, String login, String password, String invoiceNo)

List<InvoiceLine> **getInvoiceLines**(String company, String login, String password, String invoiceNo)

Credit memos

int **getNumOfCrMemos**(String company, String login, String password, Boolean open, Boolean, closed, Boolean overdue)

List<CrMemoHeader> **getCrMemoList**(String company, String login, String password, Boolean open, Boolean closed, Boolean overdue, int pageNo, int pageSize)

CrMemoHeader **getCrMemoHeader**(String company, String login, String password, String invoiceNo)

List<InvoiceVatSummary> **getCrMemoVatSummary**(String company, String login, String password, String invoiceNo)

List<CrMemoLine> **getCrMemoLines**(String company, String login, String password, String invoiceNo)

Order information

int **getNumofOrderLines**(String company, String login, String password, String requestId, String orderNo, String reasonCodeFilter, Boolean statusShippedFilter, Boolean statusUnshippedFilter)

ELIT CZ, spol. s r.o., Jeremášova 1283/18, 155 00 Praha 5 - Stodůlky, Czech Republic, www.elit.cz

Phone: +420 271 022 222 Fax: +420 271 022 333 E-mail: elit@elit.cz VAT: CZ45240337 Bank connection: 802518004/2700

ELIT CZ, spol. s r.o. is registered in the Companies Register, which is managed by Municipal Court in Prague, dlvision C, inset 6638



List<OrderHeader> **getOrderList** (String company, String login, String password, String requestId)

OrderHeader **getOrderHeader** (String company, String login, String password, String requestId, String orderNo)

List<OrderLine> **getOrderLines** (String company, String login, String password, String requestId, String orderNo, String reasonCodeFilter, Boolean StatusShippedFilter, Boolean statusUnshippedFilter, int pageSize, int pageNo)

Sending orders

boolean sendBasket(String company, String login, String password, SendBasket[] lines)

Order Line Parameters (SendBasket)

| Type | Name | Description |
|---------|-----------------------|---------------------------|
| String | no | Internal product number |
| double | quantity | Quantity |
| String | yourReference | Note (max.20 characters) |
| boolean | cashAndCarry | Personal pick up |
| String | requestedDeliveryDate | Required date of delivery |

Goods informations (Price / warehouse state)

Called function:

```
List<ItemInfo> getItemInfo(  
    String company,  
    String login,  
    String password,  
    String itemNo) // internal product number
```

Return values

```
class ItemInfo {  
  
    String customerNo; //customer number  
    String internalNo; // internal product number  
    List<Stock> stock; // state warehouses  
    double retailPrice; // basic price  
    double discountPct; // price after discount  
    double vatPct; // price with tax  
}
```

Other information

IP address **getRemoteIP** - method does not have any parameters

Web service version **getVersion** - method does not have any parameters

3. Example of use

Web services are platform independent. It is possible to connect to our web services using various programming languages that support web services (Java, C#, PHP, and others).

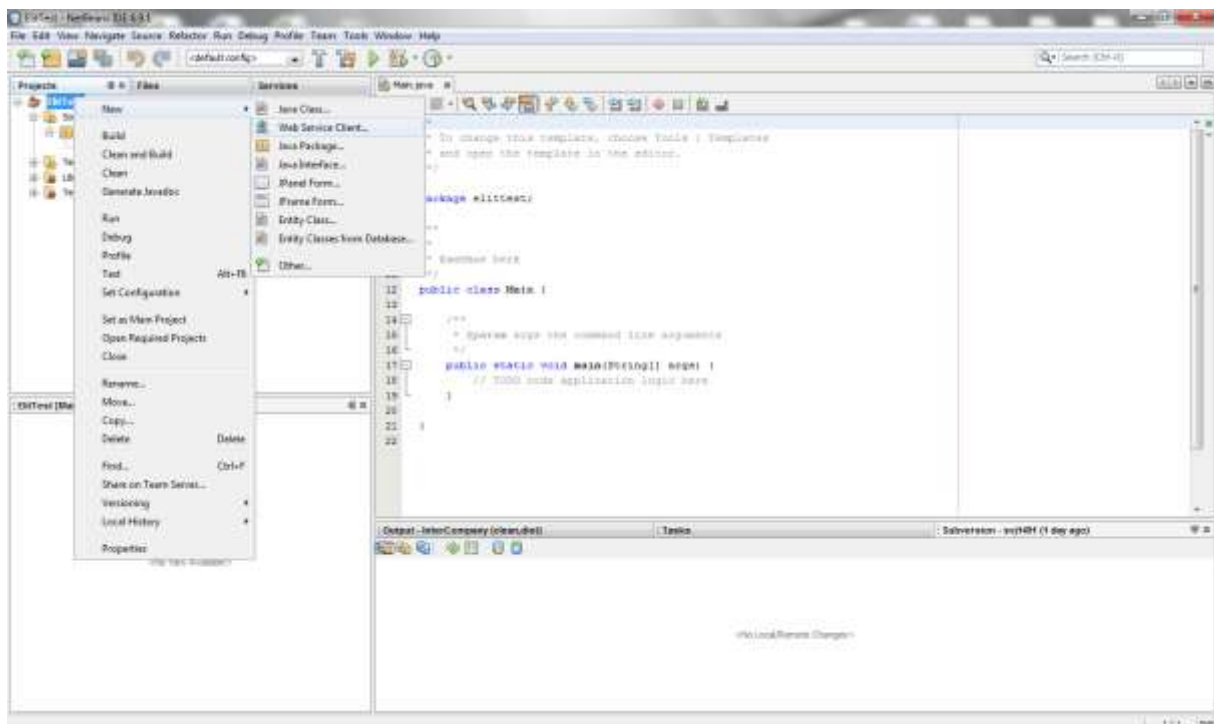
In the following example we will connect to the web service from NetBeans and call the function `getItem` on goods *NET 12 N 7439* to find detailed information about goods.

In our example we use NetBeans IDE, which is available to download for free:

<http://netbeans.org/>

If you use NetBeans, create a new project (*Ctrl + Shift + N*). Select Java Application template and name it *ElitTest*.

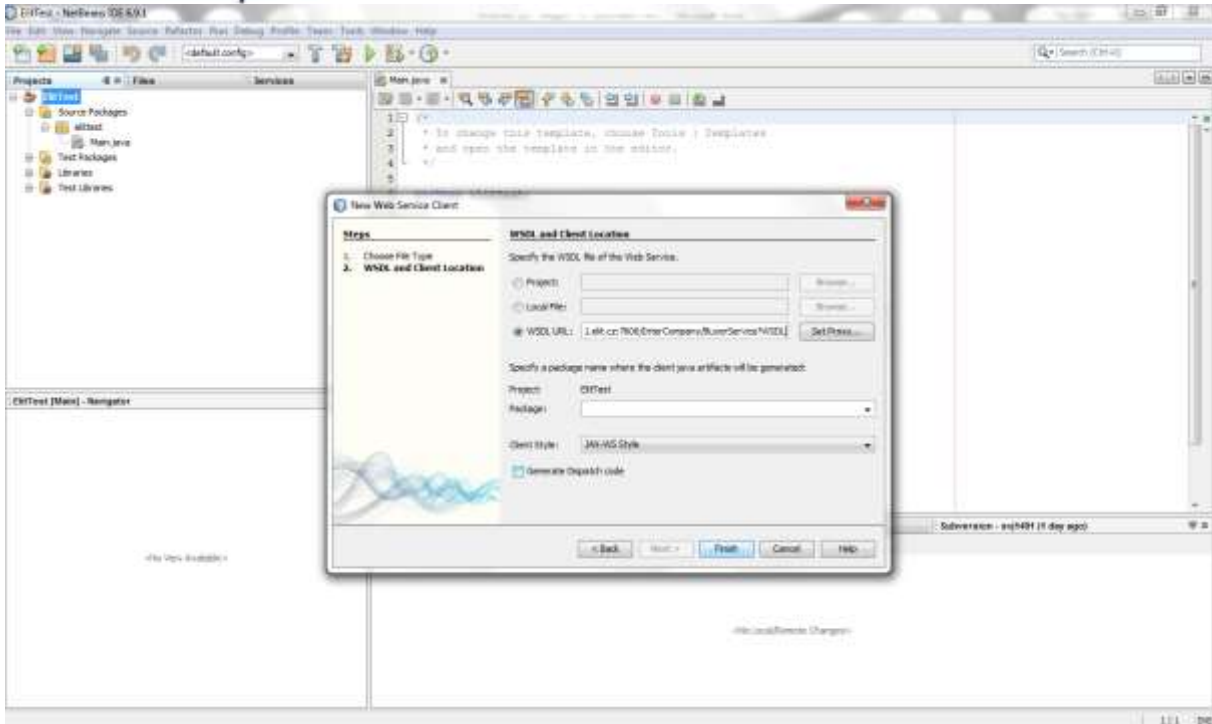
Right-click the project and select *ElitTest New->Web Service Client...*



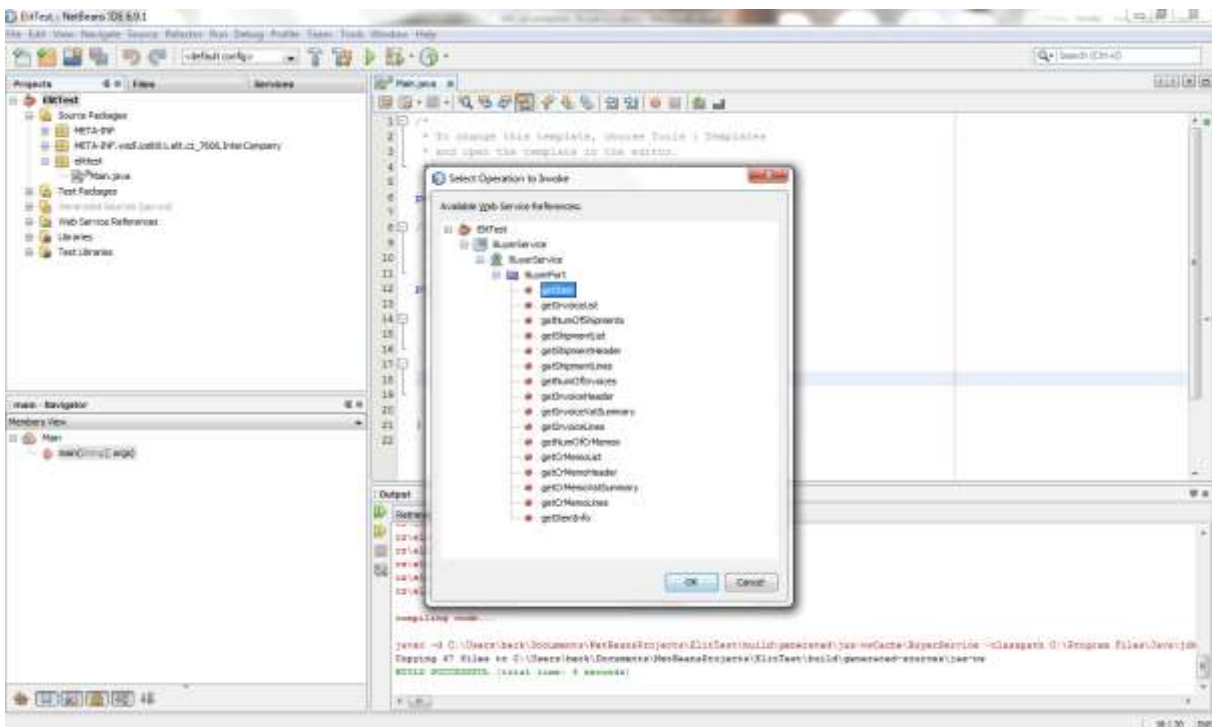
Select *WSDL URL* and enter:

<http://icelit02.elit.cz:7606/InterCompany-1.10.0/BuyerService?wsdl>

Press finish button and NetBeans will generate all the necessary connection files to the web service.



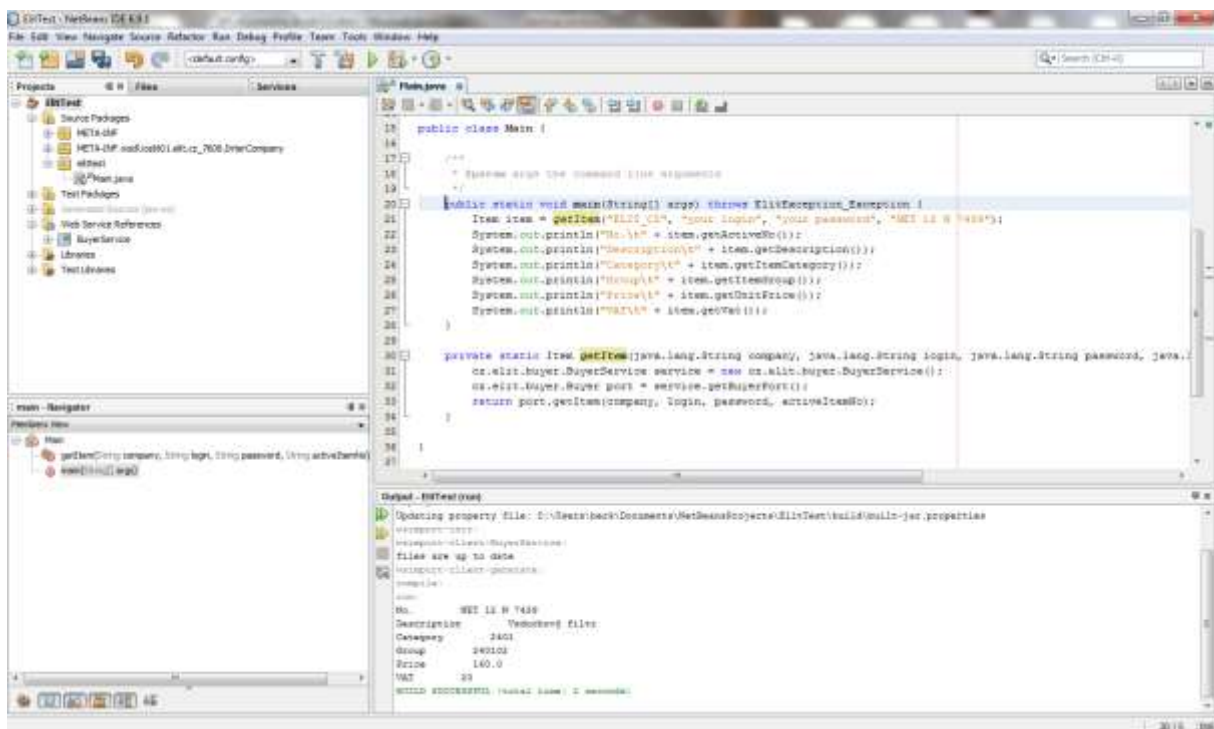
Right click anywhere in the body of the *Main.java* document to invoke context menu and select *Insert Code... -> Call Web Service Operation...*



Select method *getItem* and NetBeans will generate additional code to the *class*:

```
private static Item getItem(java.lang.String company, java.lang.String login,
java.lang.String password, java.lang.String activeItemNo) throws
ElitException Exception {
    cz.elit.buyer.BuyerService service = new cz.elit.buyer.BuyerService();
    cz.elit.buyer.Buyer port = service.getBuyerPort();
    return port.getItem(company, login, password, activeItemNo);
}
```

Use the method as in the image shown below. We have used the product number *NET 12 N 7439* as a *getItem* method parameter.



You can see the result after running the code in the output window (product code, description, group and category of goods, retail price, VAT).

This example can be adjusted so that the output can be saved into the database or a file. You can download delivery notes and other documents likewise. Compiled jar file can be used for periodic information download in the Windows Task Scheduler. You can integrate it with your IS as well.

4. Conditions

eConnector service (hereinafter Service) - web service that provides access to information that is related to the acquisition of data on goods, invoices, delivery notes, credit notes, sending baskets and implementation of related actions.

1. Terms and definitions

Supplier - ELIT CZ, spol. s r.o., Jeremiášova 1283/18, 155 00 Prague 5-Stodulky, Czech Republic.

Customer –natural or legal person who has valid login to the electronic catalog eCat 3.0

2. Use of the Service

The supplier does not provide the internet provider services

3. Liability

The Supplier is not liable for any damage to the customer caused by:

- a) misuse of the Service by unauthorized persons,
- b) use of the Service by the Customer,
- c) a technical failure on the part of the Customer or the Supplier,
- d) malfunction of the telephone, data or internet network,
- e) other circumstances

The supplier reserves the right to restrict access, without further notification to those users who try to harm the content, change it, or to disrupt the security and functionality of eConnector service or other devices of a computer network, in which the eConnector services are placed. In the event of the detection of above activities, the supplier will use all legal rights and remedies for such acts, including the criminal notification, if the Supplier has a reason that this meets the substance of the offence. The supplier is not liable for any damage caused by the using the data and services made available through eConnector services which use the data of eConnector services, i.e. using the out of date version.

The Supplier reserves the right to support eConnector services only three versions back. Older versions can be disabled after previous notification of the Customer.

4. Final provisions

Final provisions on the rights and obligations of these terms and conditions are subject to the terms and conditions of the supplier, which are part of the contract. The parties undertake to maintain the confidentiality of all messages received by the Service and even after the end of the operation of the Service.

The user is obliged to follow the manual.

Documents relating to the operation of the service will be sent from the supplier to the customer or the customer-provided e-mail address. The current conditions and manual are available within the service. The Customer is obliged to acquaint with them. The supplier is entitled to unilaterally change the terms and the manual even repeatedly. New information will be published online on the Supplier web site.

These terms and conditions come into effect on 1st January 2013.



5. Contact and support

All your questions can be directed to the following contact:

Contact: Ondřej Šípka
Telephone: +420 725 878 546
E-Mail: ondrej.sipka@elit.cz